

Note: image is for illustration purposes only.
Please talk to us regarding pricing of this home.



THE BRAE

4

2

2

The living is easy in this expansive family home

The Brae offers contemporary open plan living to easily suit a young growing family. This 4 bedroom home offers exceptional design and family functionality with the master bedroom, walk-in robe and ensuite towards the front of the house. Kids zone to the right of the home enables for zoned living. The home opens up to a spacious light filled kitchen, dining, family area that leads out to a central alfresco designed to provide year-round outdoor entertaining. Living is easy in this spacious home.

Small enough to listen, big enough to deliver

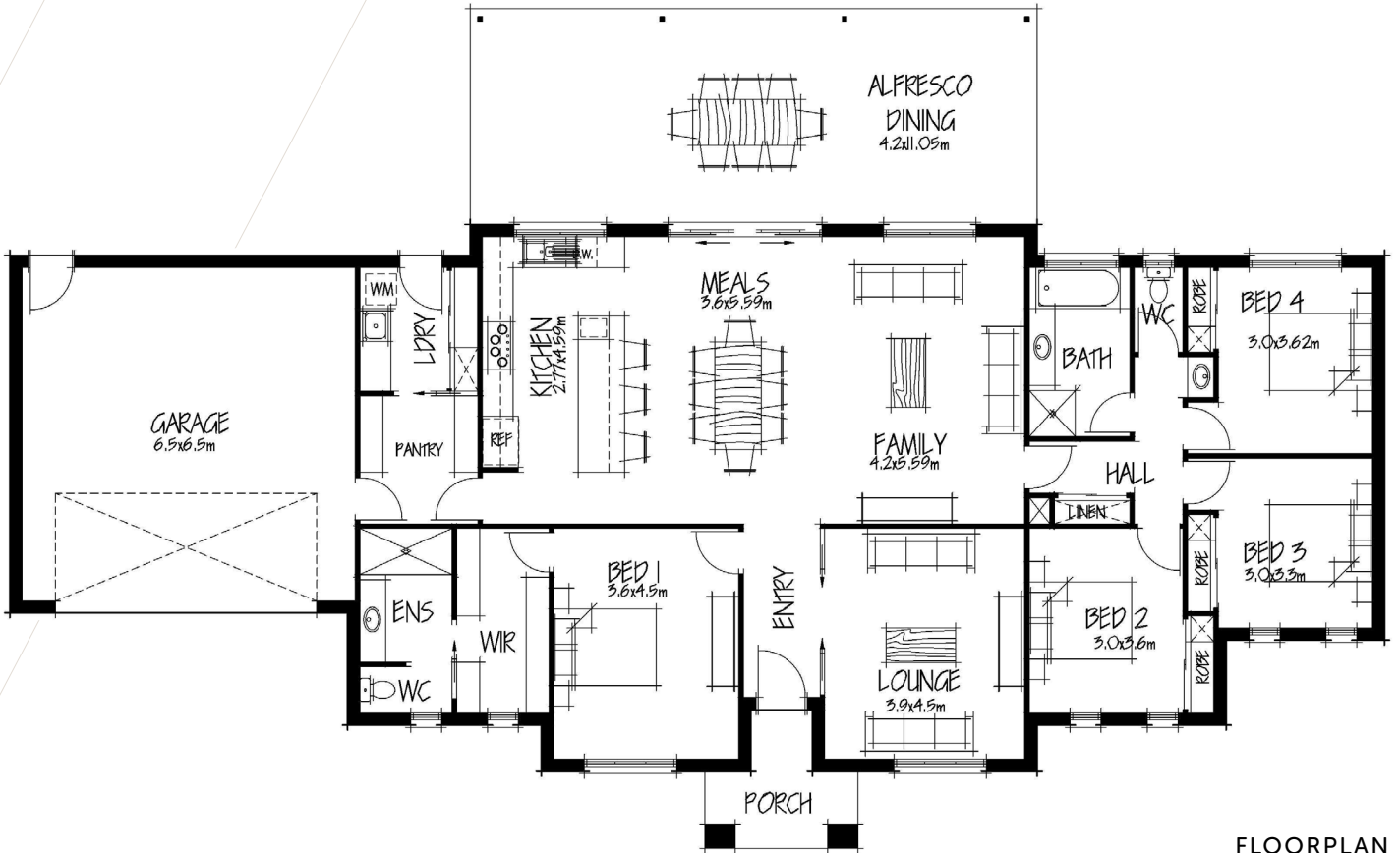
At Todd Newman Builders we are committed to, and base our reputation on, the provision of an exceptional level of service, a pride in the finished product, and more importantly, the quality of the professional and personal relationships established with our clients.

Our business foundation is beautiful homes, happy clients and a mutual respect of the relationship between builder, client, and trades.

Ready to start your journey? Have a chat with Todd Newman today.

THE BRAE

 4
  2
  2



FLOORPLAN

Home Dimensions

Total Area
292.23m² / 31.45sq

House Length
16.36m

House Width
26.72m

Room Dimensions

Family Room	3.90m x 5.59m
Meals	3.90m x 5.59m
Lounge	3.90m x 4.50m
Bedroom 1	3.60m x 4.50m
Bedroom 2	3.00m x 3.60m
Bedroom 3	3.00m x 3.30m
Bedroom 4	3.00m x 3.63m
Alfresco	4.20m x 11.05m
Double Garage	6.59m x 6.49m

Design Options

At Todd Newman Builders we understand that you may want to tailor your home to suit your needs.

For information about structural and internal design options available for this home design and floorplan, please speak to the friendly staff at Todd Newman Builders.

Ready to start your journey? Have a chat with Todd Newman today.