

The Brae



The living is easy.

The Brae floorplan delivers contemporary open plan living to easily suit a young growing family. This 4 bedroom home offers exceptional design and family functionality with the master bedroom, walk-in robe and ensuite towards the front of the house. Kids zone to the right of the home enables for zoned living. Moving through The Brae entry, the home opens up to a spacious light filled kitchen, dining, family area that leads out to a central alfresco designed to provide year-round outdoor entertaining. Living is easy in this spacious home.

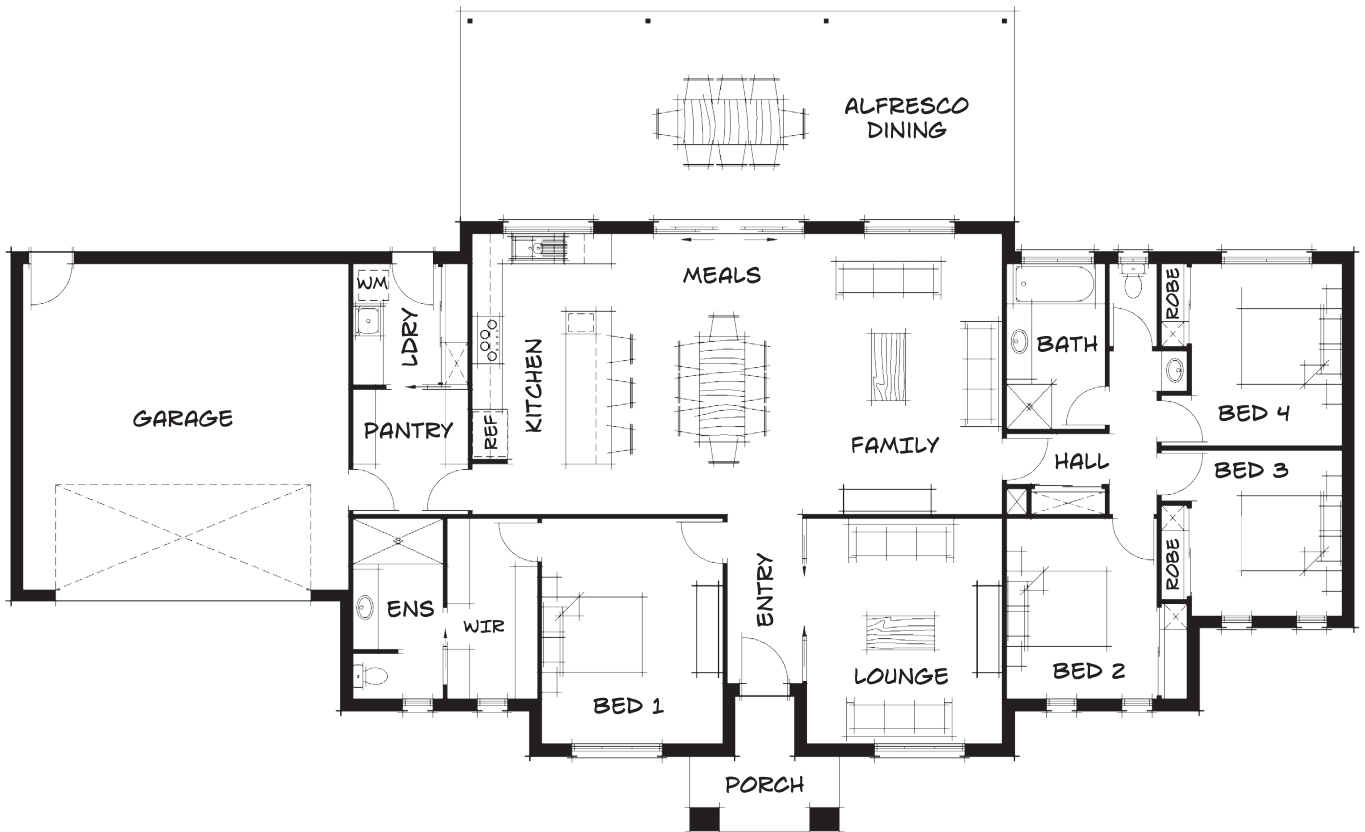
Note – Image is for illustration purposes only.
Please talk to us regarding pricing of this home.

Small enough to listen, big enough to deliver

At Todd Newman Builders we are committed to, and base our reputation on, the provision of an exceptional level of service, a pride in the finished product and more importantly, the quality of the professional and personal relationships established with our clients.

Our business foundation is beautiful homes, happy clients and a mutual respect of the relationship between builder, client and trades.

The Brae



HOME DIMENSIONS

Total Area	292.23m ² / 31.45sq
House Length	26.72m
House Width	16.36m

ROOM DIMENSIONS

Family	3.90 x 5.59m
Meals	3.90 x 5.59m
Lounge	3.90 x 4.50m
Bedroom 1	3.60 x 4.50m
Bedroom 2	3.00 x 3.60m
Bedroom 3	3.00 x 3.30m
Bedroom 4	3.00 x 3.63m
Alfresco	4.20 x 11.05m
Double Garage	6.59 x 6.49m

DESIGN OPTIONS

At Todd Newman Builders, we understand that you may want to tailor your home to suit your needs.

For information about structural and internal design options available for this home design and floor plan, please speak to our friendly staff at Todd Newman Builders.

